

LONGSHORE AT JONATHAN'S LANDING

0261-021

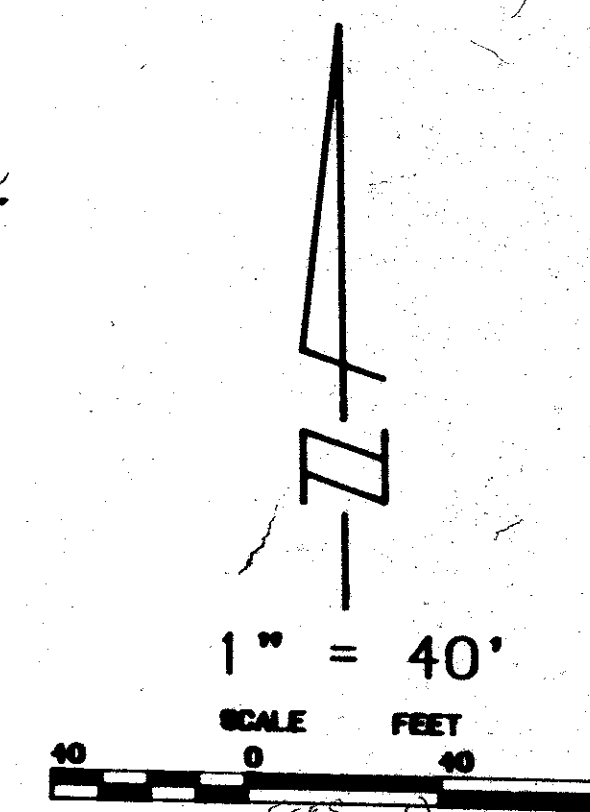
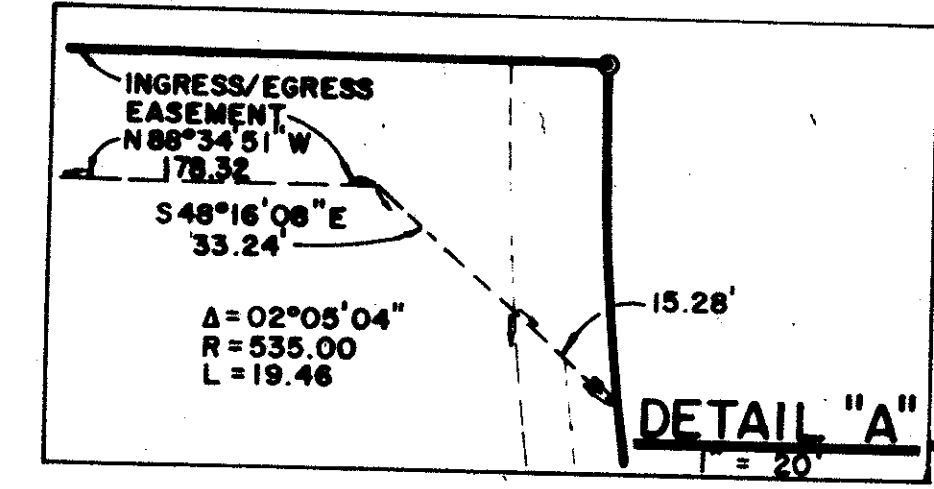
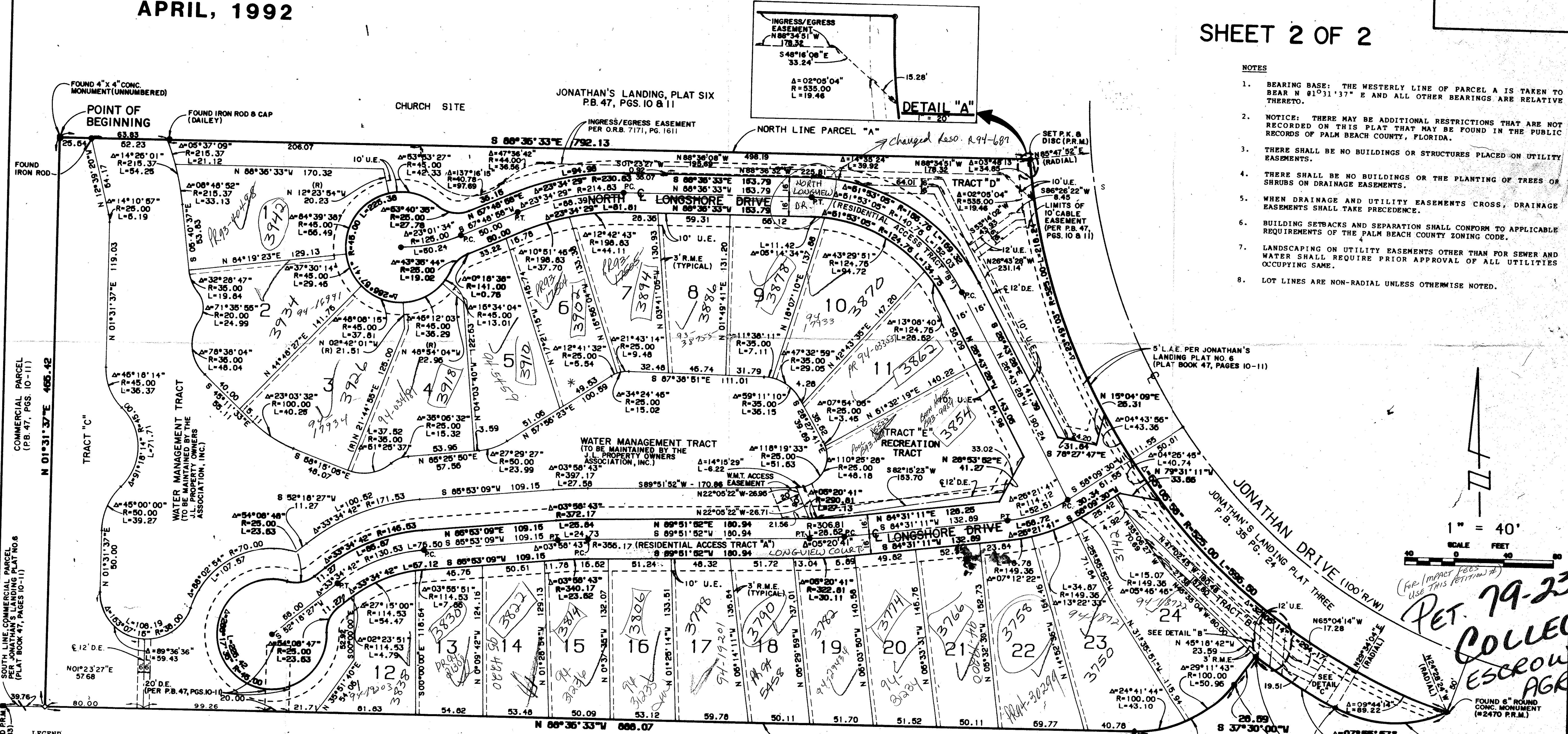
104

A PLAT OF
 BEING A REPLAT OF PARCEL "A" AND A PORTION OF
 THE LAKE TRACT AS SHOWN ON JONATHAN'S LANDING PLAT SIX, A PUD
 AS RECORDED IN PLAT BOOK 47, PAGES 10-11, AND LYING
 IN SECTION 6, TOWNSHIP 41 S., RANGE 43 E.,
 PALM BEACH COUNTY, FLORIDA

APRIL, 1992

SHEET 2 OF 2

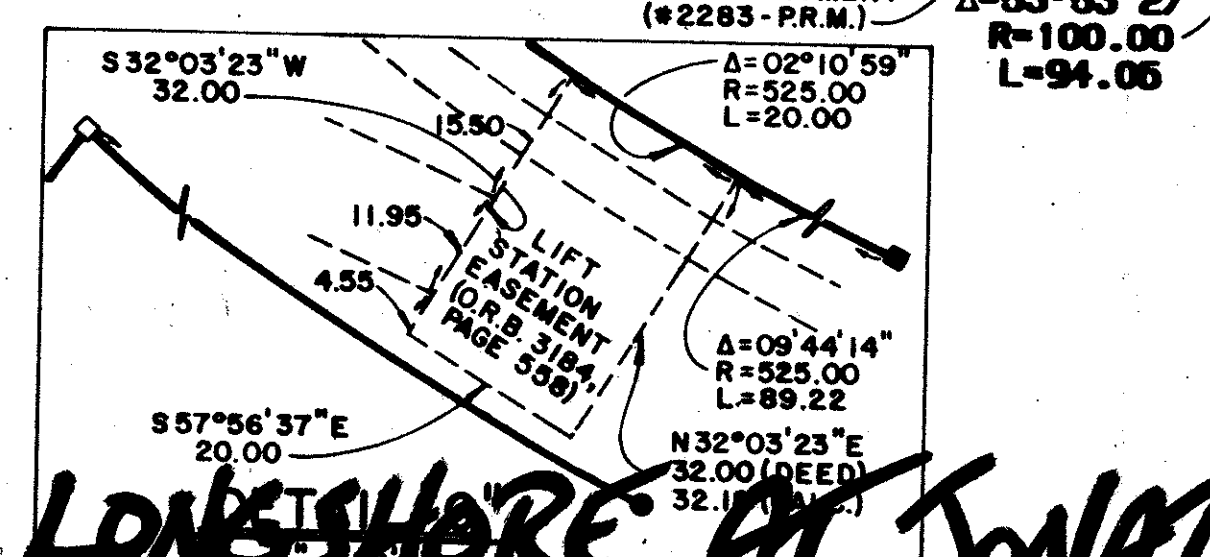
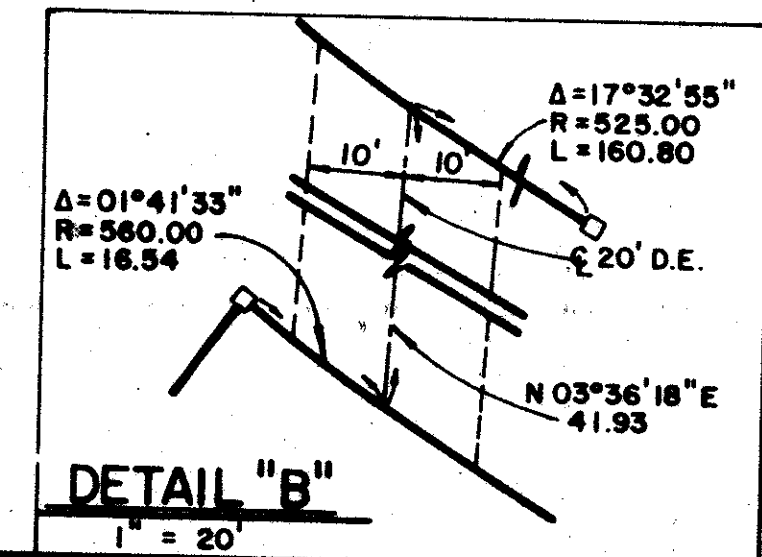
- NOTES**
1. BEARING BASE: THE WESTERLY LINE OF PARCEL A IS TAKEN TO BEAR N 91°31'37" E AND ALL OTHER BEARINGS ARE RELATIVE THERETO.
 2. NOTICE: THERE MAY BE ADDITIONAL RESTRICTIONS THAT ARE NOT RECORDED ON THIS PLAT THAT MAY BE FOUND IN THE PUBLIC RECORDS OF PALM BEACH COUNTY, FLORIDA.
 3. THERE SHALL BE NO BUILDINGS OR STRUCTURES PLACED ON UTILITY EASEMENTS.
 4. THERE SHALL BE NO BUILDINGS OR THE PLANTING OF TREES OR SHRUBS ON DRAINAGE EASEMENTS.
 5. WHEN DRAINAGE AND UTILITY EASEMENTS CROSS, DRAINAGE EASEMENTS SHALL TAKE PRECEDENCE.
 6. BUILDING SETBACKS AND SEPARATION SHALL CONFORM TO APPLICABLE REQUIREMENTS OF THE PALM BEACH COUNTY ZONING CODE.
 7. LANDSCAPING ON UTILITY EASEMENTS OTHER THAN FOR SEWER AND WATER SHALL REQUIRE PRIOR APPROVAL OF ALL UTILITIES OCCUPYING SAME.
 8. LOT LINES ARE NON-RADIAL UNLESS OTHERWISE NOTED.



- LEGEND**
- SET IRON ROD & CAP (LB #959)
 - PERMANENT REFERENCE MONUMENT (P.R.M.) FOUND
 - PERMANENT REFERENCE MONUMENT (P.R.M.) SET (LS#4198)
 - ▲ CENTRAL ANGLE
 - W.M.T. WATER MANAGEMENT TRACT
 - U.E. UTILITY EASEMENT
 - D.E. DRAINAGE EASEMENT
 - L.A.E. LIMITED ACCESS EASEMENT
 - R.M.E. RECIPROCAL MAINTENANCE EASEMENT
 - P.C. POINT OF CURVATURE
 - P.T. POINT OF TANGENCY
 - SET P.K. & DISC (P.C.R.) #4198

TABULAR DATA

NUMBER OF LOTS = 24
TOTAL AREA = 9.555 ACRES
UNITS PER ACRE = 2.51
WATER MANAGEMENT TRACT = 1.49 ACRES
AREA TRACTS B, C, AND D = 1.935 ACRES
ZONING PETITION NUMBER 74-195



RET. 79-230
 COLLECT
 ESCROW
 AGRM.

0261-021
 69/104